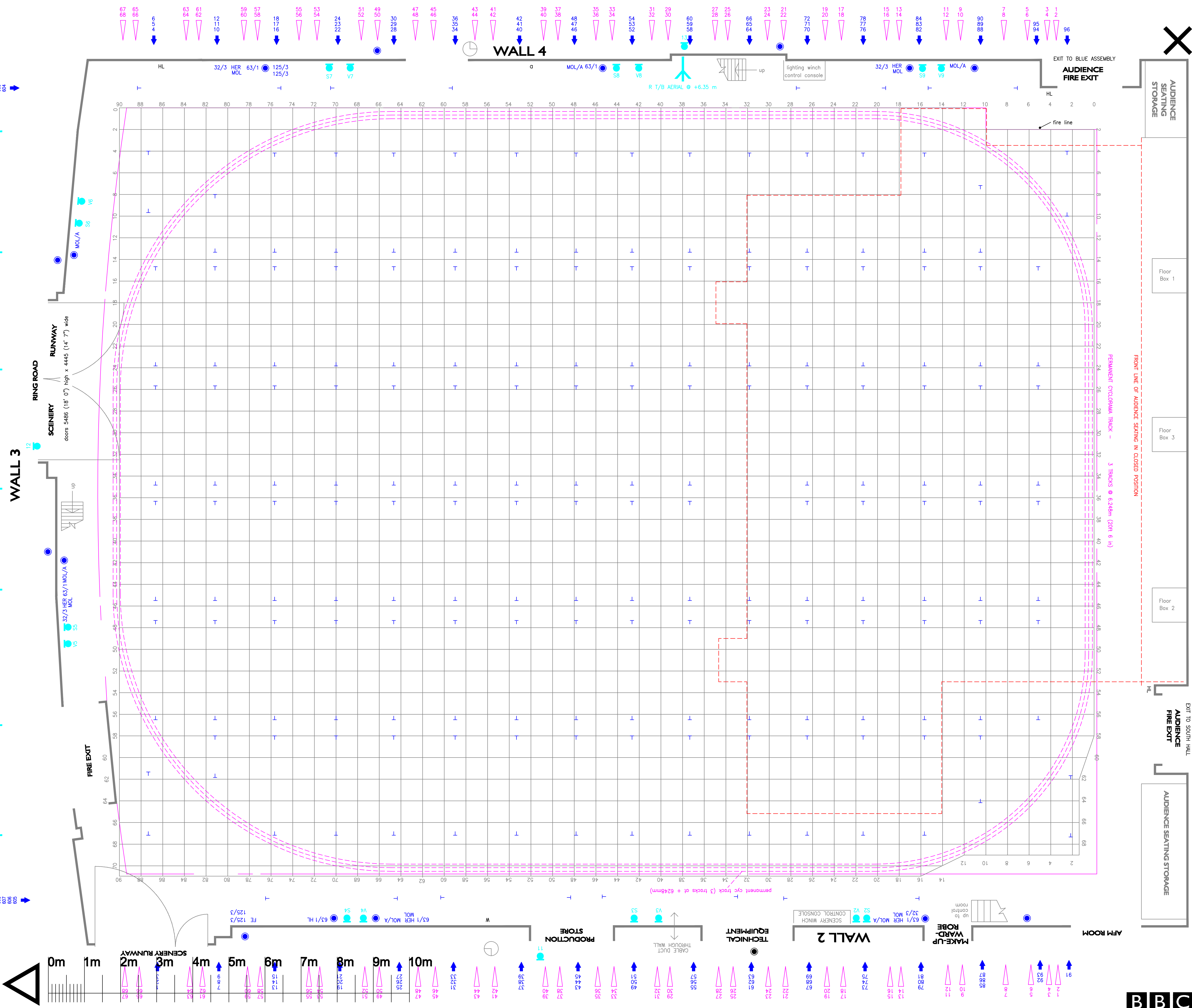


TC4



- KEY TO SYMBOLS**
- FE FIRE EXTINGUISHER
  - HL HOUSE LIGHTS
  - HR HOSE REEL
  - o COMPRESSED AIR
  - w WATER
  - 32/3 32A 415V 3 PHASE G.S. SUPPLY
  - 63/1 63A 240V G.S. SUPPLY
  - 125/3 125A 3 PHASE SOCKET OUTLET
  - VIDEO & SOUND DISTRIBUTION BOXES
  - HER HERON - 230V 3 PHASE 16 AMP SUPPLY
  - MOL MOLE - 110V DC 63 AMP SUPPLY
  - MOL/A MOLE AUXILIARY SUPPLY RCD 16 AMP
  - 5kW SOCKET OUTLET
  - SCENERY WINCHES. SAFE WORKING LOAD 112kg
  - LIGHTING WINCHES.
  - LIGHTING BARS
  - CASTELLA BEAMS
  - LINE OF AUDIENCE SEATING

NOTES: STUDIO FLOOR GRID MADE UP OF 600mm SQUARES  
HEIGHT TO UNDERSIDE OF GRID 10.668

**DESIGNERS NOTES**

DUTY STUDIO CO-ORDINATOR - 24hr - 67077

**TC4 TELEPHONE LIST**

60240	EDITOR
60241	DIRECTOR
60242	PRODUCTION BOOTH
60243	LIGHTING DIRECTOR
60244	VISION BAYS
60245	SOUND SUPERVISOR
60246	MAINTENANCE
60247	MAKE UP
60248	COSTUME
60249	SRM
N/A	STUDIO FLOOR
64461	TECHNICAL STORE
63623	PRODUCTION STORE
N/A	DIMMER ROOM
58909	AFM ROOM

DIRECTOR	ROOM
DESIGNER	EXT
DRAWN BY	EXT
ZERO	EXT
PRODUCTION DATE	

SCALE 1:50 @ A1

**DESIGNERS LAYOUT**  
**TC 4**  
**PRODUCTION**

**COSTING NO.**  
5040.2.1A0 - ISS 2 EMH - PMS PAL 18/10/2010

© BBC Studios and Post Production Ltd 2010  
This drawing may not be copied or reproduced without the permission of BBC Studios and Post Production Ltd. Issued January 2010. All previous versions superceded.