

DESIGNERS NOTES

KEY TO SYMBOLS

- FE FIRE EXTINGUISHER
- HL HOUSE LIGHTS
- HR HOSE REEL
- o COMPRESSED AIR
- w WATER
- TS TECH. & G.S. 13A SOCKET
- 16/3 16A 415V 3 PHASE SUPPLY
- 32/3 32A 415V 3 PHASE SUPPLY
- 63/1 63A 240V SINGLE PHASE SUPPLY
- 125/3 125A 3 PHASE SOCKET OUTLET
- 115V DC SUPPLY
- VIDEO & SOUND DISTRIBUTION BOXES
- CAMERA CABLES CONNECTION
- HER HERON - 230V 3 PHASE 16 AMP SUPPLY
- MOL MOL - 110V DC 63 AMP SUPPLY
- MOL/A MOLE AUXILIARY SUPPLY RCD 16 AMP
- 5kW SOCKET OUTLET
- 10kW LIGHTING OUTLET
- ▲ SCENERY WINCHES. SAFE WORKING LOAD 114kg (250lb)
- ▲ LIGHTING WINCHES. SAFE WORKING LOAD 200kg (440lb)
- T LIGHTING BARS
- ▲ CASTELLA BEAMS
- MAIN ROOF TRUSSES
- - - LINE OF AUDIENCE SEATING
- - - LINE OF CYCLORAMA TRACK

NOTES:
 - STUDIO FLOOR GRID MADE UP OF 600mm SQUARES
 - HEIGHT TO UNDERSIDE OF GRID 10.668m (35ft.)
 - MAX. HEIGHT OF LIGHTING BARS IS 10.00m (32ft. 10ins.)
 - MAX. HEIGHT OF SCENERY HOOKS IS 9.60m (31ft. 6ins.)

DUTY STUDIO CO-ORDINATOR - 24hr - 67077

TC3 TELEPHONE LIST

60230	EDITOR
60231	DIRECTOR
60232	PRODUCTION BOOTH
60233	LIGHTING DIRECTOR
60234	VISION BAYS
60235	SOUND SUPERVISOR
60236	MAINTENANCE
60237	MAKE UP
60238	COSTUME
60239	SRM
N/A	STUDIO FLOOR
68498	TECHNICAL STORE
62633	PRODUCTION STORE
65895	GREEN ROOM
65896	GREEN ROOM
67664	GREEN ROOM

DIRECTOR	ROOM
DESIGNER	EXT
DRAWN BY	EXT
ZERO	EXT
PRODUCTION DATE	

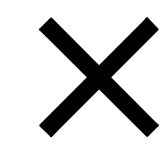
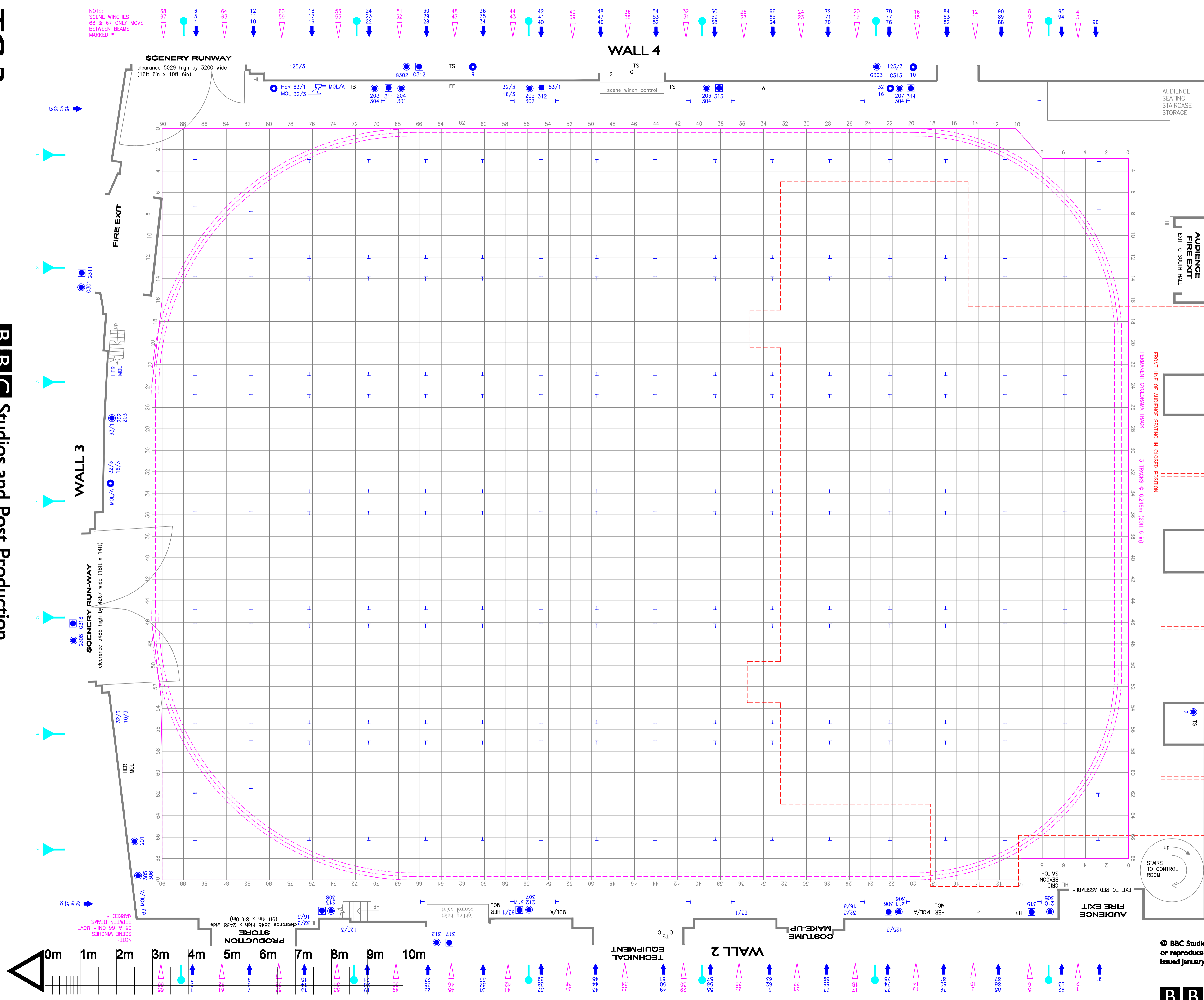
DESIGNERS LAYOUT
METRIC STUDIO PLAN SCALE 1:50 @ A1

TC 3

PRODUCTION

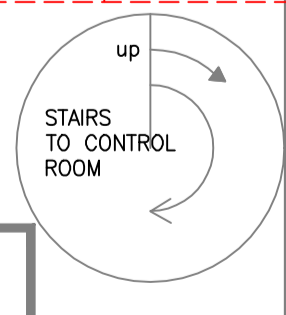
COSTING NO. 5030.2.28A0 - ISS 1 CJC - C&P PAL 18/01/2010

© BBC Studios and Post Production Ltd 2010 This drawing may not be copied or reproduced without the permission of BBC Studios and Post Production Ltd. Issued January 2010. All previous versions superceded.



CONTROL ROOM - WALL 1

FRONT LINE OF AUDIENCE SEATING IN CLOSED POSITION
3 TRACKS @ 6.246m (20ft 6 in)



- 68, 67, 64, 12, 11, 10, 8, 6, 5, 4, 3, 2, 1
- 18, 17, 16, 15, 14, 13, 12, 11, 10, 9, 8, 7, 6, 5, 4, 3, 2, 1
- 48, 47, 46, 45, 44, 43, 42, 41, 40, 39, 38, 37, 36, 35, 34, 33, 32, 31, 30, 29, 28, 27, 26, 25, 24, 23, 22, 21, 20, 19, 18, 17, 16, 15, 14, 13, 12, 11, 10, 9, 8, 7, 6, 5, 4, 3, 2, 1
- 66, 65, 64, 63, 62, 61, 60, 59, 58, 57, 56, 55, 54, 53, 52, 51, 50, 49, 48, 47, 46, 45, 44, 43, 42, 41, 40, 39, 38, 37, 36, 35, 34, 33, 32, 31, 30, 29, 28, 27, 26, 25, 24, 23, 22, 21, 20, 19, 18, 17, 16, 15, 14, 13, 12, 11, 10, 9, 8, 7, 6, 5, 4, 3, 2, 1
- 72, 71, 70, 69, 68, 67, 66, 65, 64, 63, 62, 61, 60, 59, 58, 57, 56, 55, 54, 53, 52, 51, 50, 49, 48, 47, 46, 45, 44, 43, 42, 41, 40, 39, 38, 37, 36, 35, 34, 33, 32, 31, 30, 29, 28, 27, 26, 25, 24, 23, 22, 21, 20, 19, 18, 17, 16, 15, 14, 13, 12, 11, 10, 9, 8, 7, 6, 5, 4, 3, 2, 1
- 84, 83, 82, 81, 80, 79, 78, 77, 76, 75, 74, 73, 72, 71, 70, 69, 68, 67, 66, 65, 64, 63, 62, 61, 60, 59, 58, 57, 56, 55, 54, 53, 52, 51, 50, 49, 48, 47, 46, 45, 44, 43, 42, 41, 40, 39, 38, 37, 36, 35, 34, 33, 32, 31, 30, 29, 28, 27, 26, 25, 24, 23, 22, 21, 20, 19, 18, 17, 16, 15, 14, 13, 12, 11, 10, 9, 8, 7, 6, 5, 4, 3, 2, 1
- 90, 89, 88, 87, 86, 85, 84, 83, 82, 81, 80, 79, 78, 77, 76, 75, 74, 73, 72, 71, 70, 69, 68, 67, 66, 65, 64, 63, 62, 61, 60, 59, 58, 57, 56, 55, 54, 53, 52, 51, 50, 49, 48, 47, 46, 45, 44, 43, 42, 41, 40, 39, 38, 37, 36, 35, 34, 33, 32, 31, 30, 29, 28, 27, 26, 25, 24, 23, 22, 21, 20, 19, 18, 17, 16, 15, 14, 13, 12, 11, 10, 9, 8, 7, 6, 5, 4, 3, 2, 1
- 95, 94, 93, 92, 91

