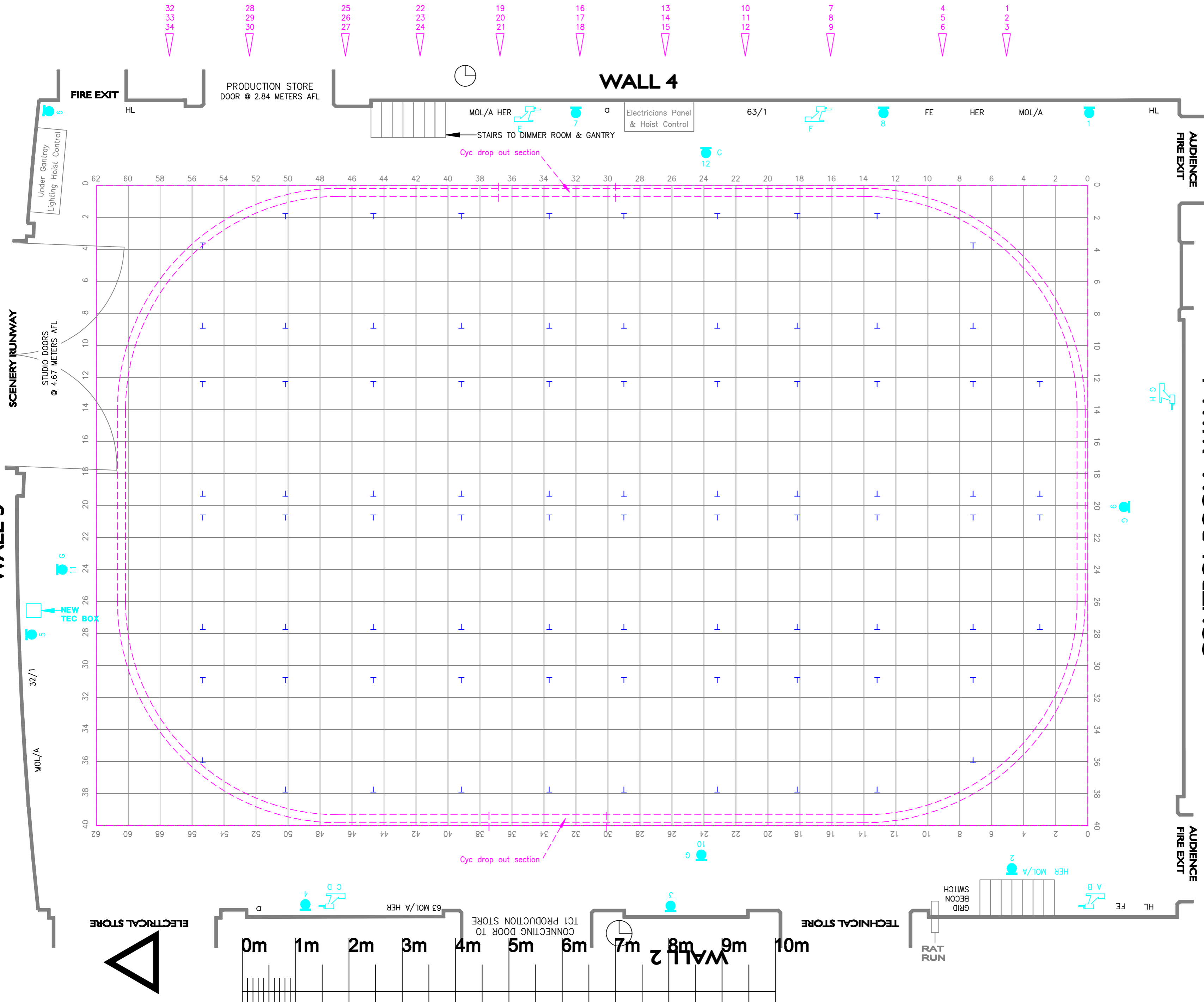


BBC Studios and Post Production



KEY TO SYMBOLS

- FE FIRE EXTINGUISHER
- HL HOUSE LIGHTS
- HR HOSE REEL
- a COMPRESSED AIR
- w WATER
- 32/1 32A 240V SINGLE PHASE G.S. SUPPLY
- 32/3 32A 415V 3 PHASE G.S. SUPPLY
- 63/1 63A 240V G.S. SUPPLY
- VIDEO & SOUND DISTRIBUTION BOXES
- HER CAMERA CABLES CONNECTION
- HERON - 230V 3 PHASE 16 AMP SUPPLY
- MOL MOLE - 110V DC 63 AMP SUPPLY
- MOL/AMOLE AUXILIARY SUPPLY RCD 16 AMP
- SCENERY WINCHES. SAFE WORKING LOAD 120kg
- LIGHTING BARS
- LINE OF AUDIENCE SEATING

NOTES: STUDIO FLOOR GRID MADE UP OF 600mm SQUARES
HEIGHT TO UNDERSIDE OF GRID 7620

DUTY STUDIO CO-ORDINATOR - 24hr - 67077

TC2 TELEPHONE LIST

- 60220 EDITOR
- 60221 DIRECTOR
- 60222 PRODUCTION BOOTH
- 60223 LIGHTING DIRECTOR
- 60224 VISION BAYS
- 60225 SOUND SUPERVISOR
- 60226 MAINTENANCE
- 60227 MAKE UP
- 60228 COSTUME
- 60229 SRM
- 62249 STUDIO FLOOR
- 65121 TECHNICAL STORE
- 63623 PRODUCTION STORE
- 68508 DIMMER ROOM
- 68469 LIGHTING WORKSHOP
- 63252 MECHANICAL WORKSHOP
- 63258 PRODUCTION STORES

DIRECTOR	
DESIGNER	ROOM
DRAWN BY	EXT
ZERO	EXT
PRODUCTION DATE	

SCALE 1:50

DESIGNERS LAYOUT

TC 2

PRODUCTION

COSTING NO.

5020.2.17A1 - ISS 2 TWL - BBCT PAL 18/01/10

© BBC Studios and Post Production Ltd 2010
This drawing may not be copied or reproduced without the permission of BBC Studios and Post Production Ltd. Issued January 2010. All previous versions superceded.